

SELECTED WORKS

ózer+tulgan
architects

**WE COLLABORATE
WITH PUBLIC AND
PRIVATE CLIENTS TO
DESIGN HEALTHY,
EFFICIENT, ECO-
FRIENDLY SOLUTIONS
THAT WORK FROM
INSIDE OUT.**

ozer+tulgan

A B O U T

Özer+Tulgan
Architects has been
founded in 2007
by Emre Özer and
Tayfun Tulgan.

Özer+Tulgan
Architects provides
integrated
architecture, interior
design, engineering
and consulting
services to clients
nationwide and
internationally.



EMRE ÖZER

19.03.1980

Bilkent University
Bachelor of Fine Arts in
Interior Architecture
and Environmental Design

TAYFUN TULGAN

24.06.1972

TU Wien
Yıldız Technicel University
Bachelor of Architecture
Illnois Institute of Technology
Master of Architecture

C O N T E N T



HOSPITALITY



MIXED-USE



CORPORATE



COMMERCIAL



RESIDENTIAL



EDUCATIONAL



HOSPITALITY

MELDEN RESORT HOTEL FETHİYE



FETHİYE
TURKEY



21.000 m2



2020



ARCH + INT + LNSCP



IN DESIGN



MELDEN RESORT HOTEL FETHİYE



MELDEN RESORT HOTEL FETHİYE



MELDEN RESORT HOTEL FETHİYE



SUNDIA BY LIBERTY HOTEL FETHİYE



FAÇADE + POOL + LNDSCP



UNDER CONSTRUCTION





RADISSON BLU NIAMEY

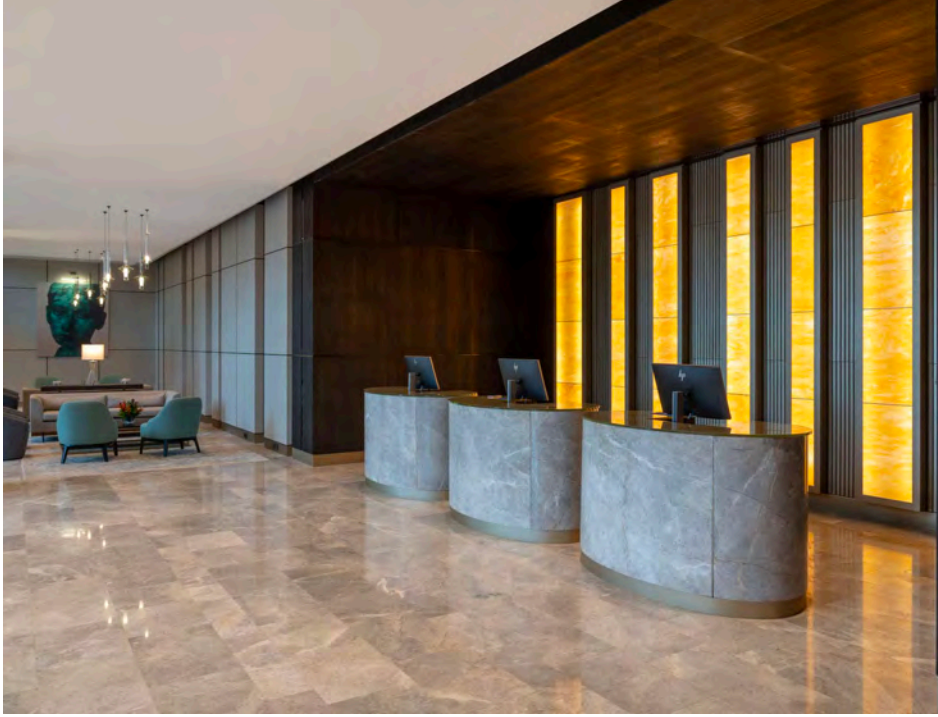


The new hotel in Niamey city centre is sited on Boulevard de la Republique North of the Palais des Congres. Located also in this area are the Tunisian National University, the Federal Government Offices of Niger, the old Presidential Palace, the National Hospital of Niger and many other important institutional buildings. The new Niamey Hotel will take its position of importance alongside some of Niger's most significant institutions.

The hotel is conceived as an integrated banquet and congress hotel complex where the functions complement each other. The hotel will operate through out the year with extensive views of the river Niger, to the West.

The circa 196 key hotel includes a banquet hall, numerous conference rooms, an all day dining restaurant, lounge bar, Irish bar, swimming pools and spa. There are 170 standard rooms, 12 Executive Suites, 12 Junior Suites, a royal presidential suite, and a presidential suite.

The total area of the complex will be over 21,000sqm.









THE PENINSULA ISTANBUL



ISTANBUL



70.000 m2



-



ARCH, INT & LNDSCP
FOH: Project & Coordination
BOH: Design, Project & Coordination



UNDER CONSTRUCTION



Demolition on the project site began in June 2016 with an expected completion date in mid 2020. The Peninsula Istanbul will have approximately 180 rooms, a ballroom with sweeping views of the Bosphorus, indoor and outdoor swimming pools, spa and a verdant garden on the waterfront.

The Peninsula Istanbul will form part of the wider Galataport project, which incorporates a promenade, museums, art galleries, restaurants, boutiques, retail units, parks and public spaces for the local community as well as a cruise passenger terminal with global standards.



Located in the Belgrade forest, Istanbul, the project consists of a main hotel building, a pool building and bungalows. The main building is housing the reception area, the restaurant, the spa and fitness facilities.

In the project which was designed as a health hotel especially for children, the planning was done in such a way as to damage the nature in the least way. The maximum height in the project is limited to 6 meters and all the buildings were designed in the slope of the terrain and with green roofs. Wood and natural stone are used throughout the project.







PARK HYATT @ VITA PARK GOLF RESORT BODRUM

BODRUM
MILAS

40.000 m2

-

ARCH (together w/ WATG)

ON HOLD



Like the journey of the Turkish hillside towns of Kayakoy and Sandima that have been re-discovered in the hills surrounding Bodrum, the Park Hyatt leads to the discovery of a lost hill side village in the pine forests of Vita Park.

The design respects every tree and creates green courtyards that become the organizing spaces of the project. Each courtyard houses existing pine trees that become the focal attention of the surrounding spaces and focuses the vistas on to the next courtyard. The massing of the buildings has been organized as a series of small volumes that cascade down the hill allowing for panoramic views from large landscaped terraces.

Nature is brought into the heart of each space and nature penetrates the circulation of each path that traverses down the hill through a series of wooden and stone steps along water falling brooks. The essence of the design is the environment, the integration of nature into the heart of each space to create a unique destination in the hills of Bodrum. The hotel of the is located in the Vita Park Golf Resort consisting of an 18-Hole course, driving range & practice area. In future it is planned for the resort to accommodate a golf school and various sports facilities.





DIVAN HOTEL ADANA



ADANA



27.000 m2



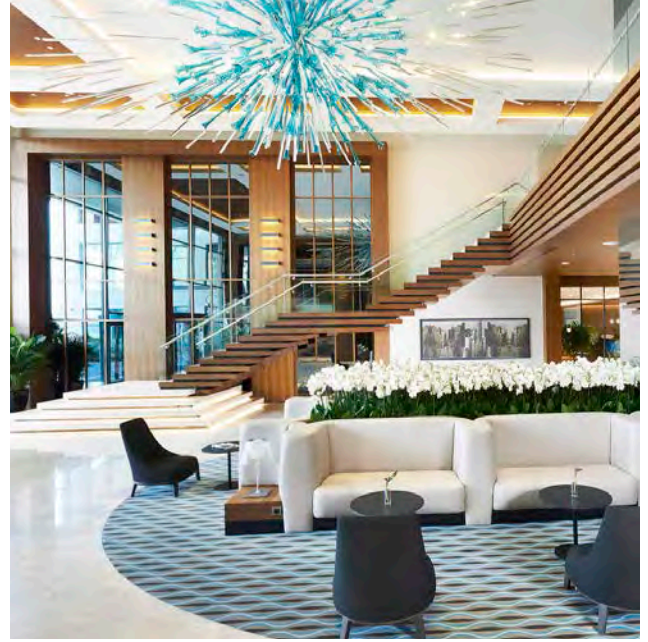
2013

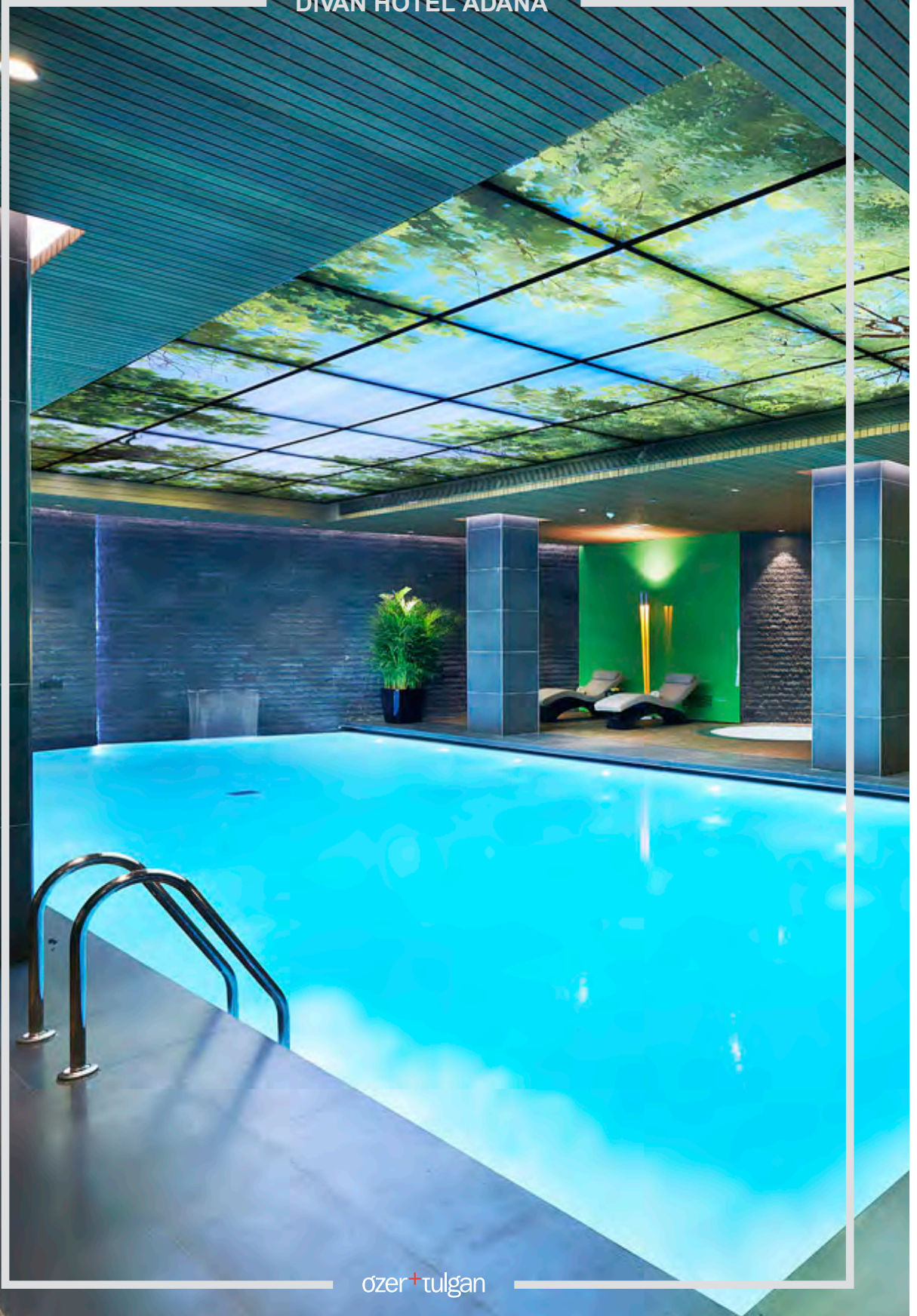


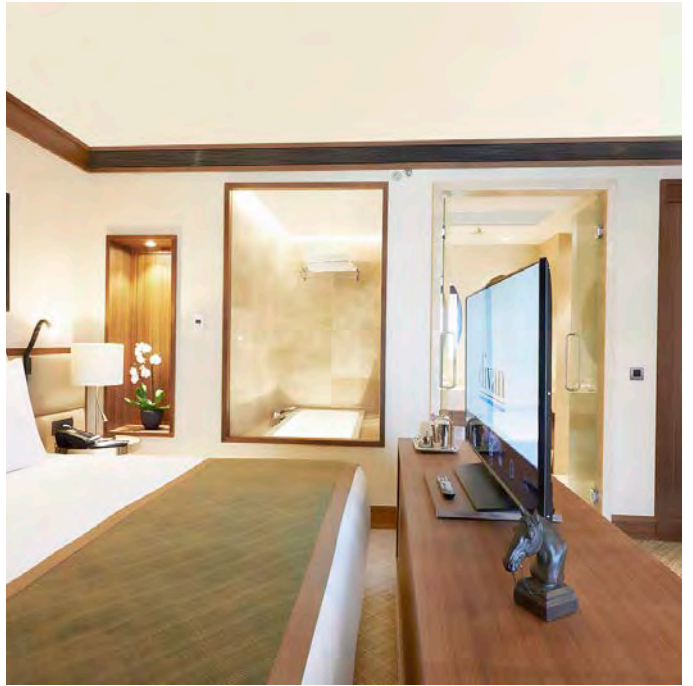
INTERIORS



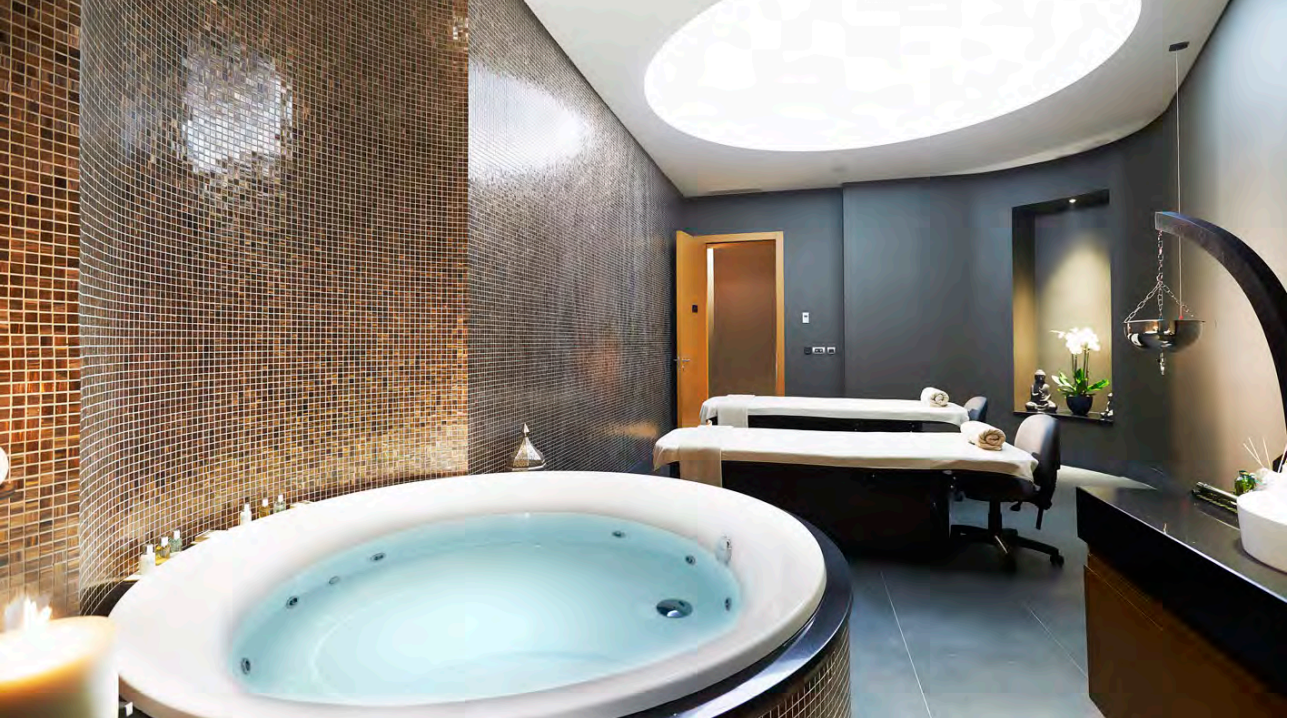
BUILT











DOUBLE TREE BY HILTON ADANA



ADANA



15.600 m²



2019



FAÇADE + INT



BUILT



DOUBLE TREE ADANA



DOUBLE TREE ADANA



DOUBLE TREE ADANA



DOUBLE TREE ADANA



"SPORT" HOTEL @ OLYMPIC COMPLEX ASHGABAT



ASHGABAT
TURKMENISTAN



68.000 m2



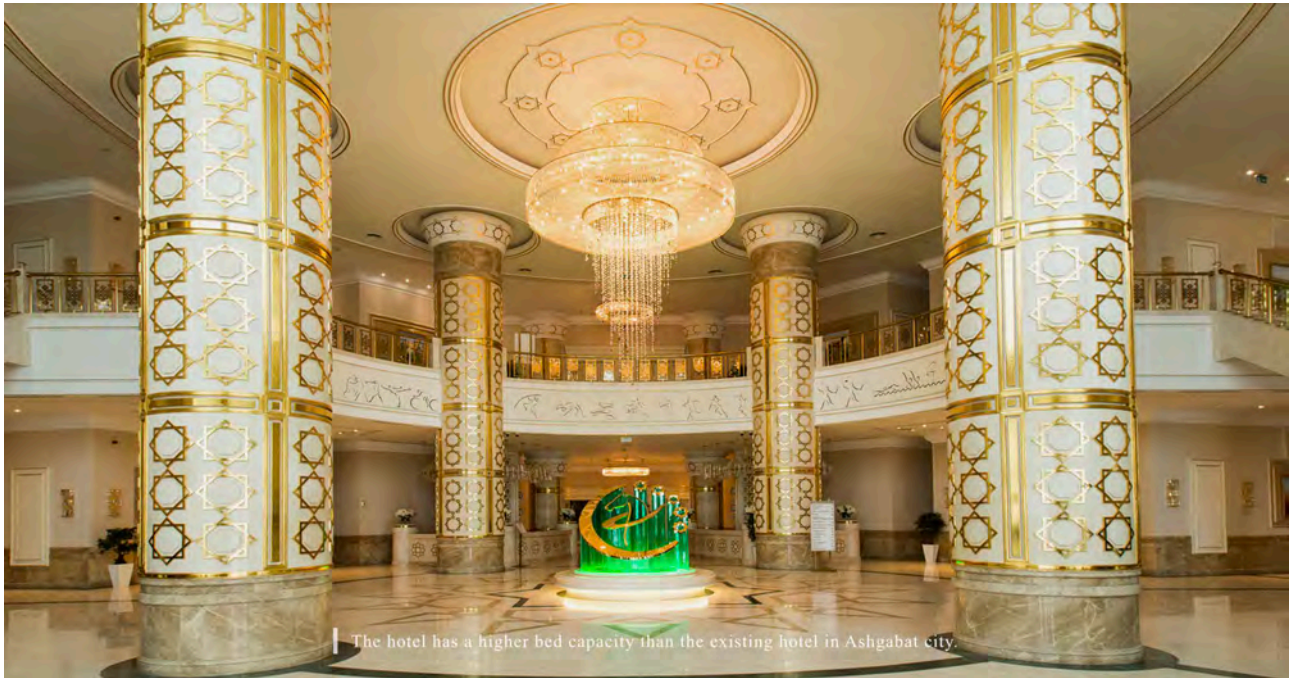
2013



INTERIORS



BUILT



The Ashgabat "Sport" Hotel is part of the 'Ashgabat Olympic Complex' project; the new Olympic complex that just hosted the 2017 Asian Indoor and Martial Arts Games in Turkmenistan.

The hotel is located to the southwest of the Olympic complex and accommodates international guests, representatives from the sports federation and members of the press. The ten-story hotel has 800 beds, a press center and a conference hall with 700 seats. The press center accommodates a press working area with 60 desks and two press conference rooms.

ARUP provided architectural and core engineering design services while özer+tulgan Architects provided all the interior design services.

"SPORT" HOTEL ASHGABAT



"SPORT" HOTEL ASHGABAT



DOUBLE TREE BY HILTON MODA



ISTANBUL



27.000 m2



2009



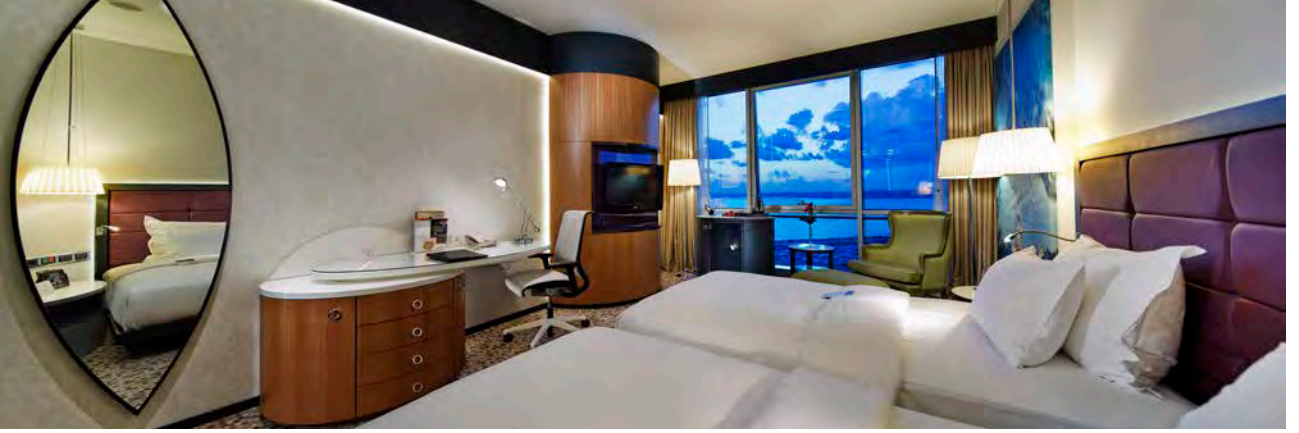
INTERIORS



BUILT







VICEROY ESTATE BEBEKOY



ISTANBUL



40.000 m2



INTERIORS (together w/ Wimberly Interiors)



DISCONTINUED



VICEROY ESTATE BEBEKOY



VICEROY ESTATE BEBEKOY



OMMER HOTEL KAYSERİ



KAYSERİ



20.000 m2



2013

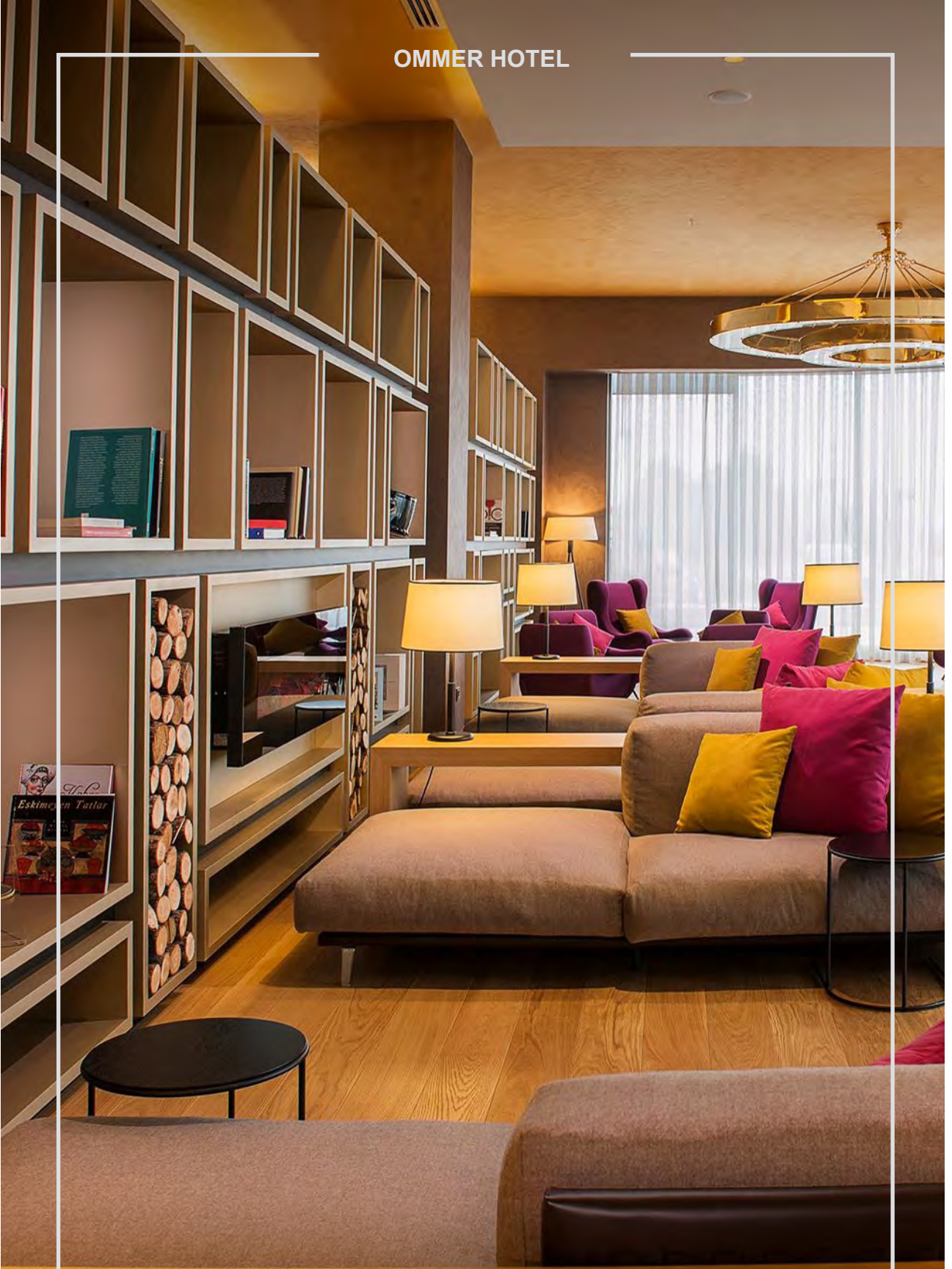


INTERIORS



BUILT





OMMER HOTEL



DOUBLE TREE BY HILTON KUŞTEPE



ISTANBUL



28.300 m2



2014



ARCH + INT



DISCONTINUED (Building Structure Completed)



DOUBLE TREE KUŞTEPE



DOUBLE TREE BY HILTON TRABZON



TRABZON



17.500 m²



2012



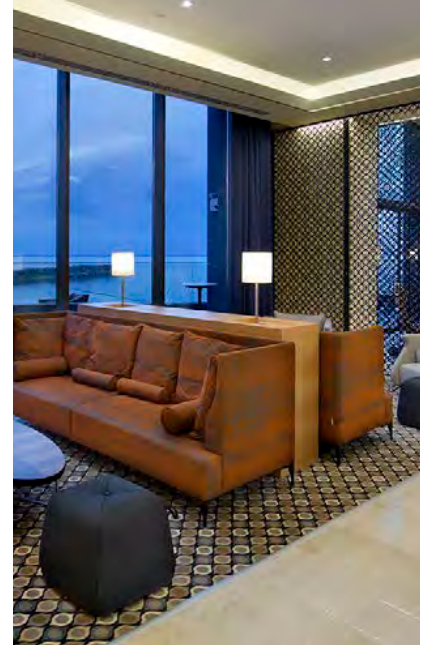
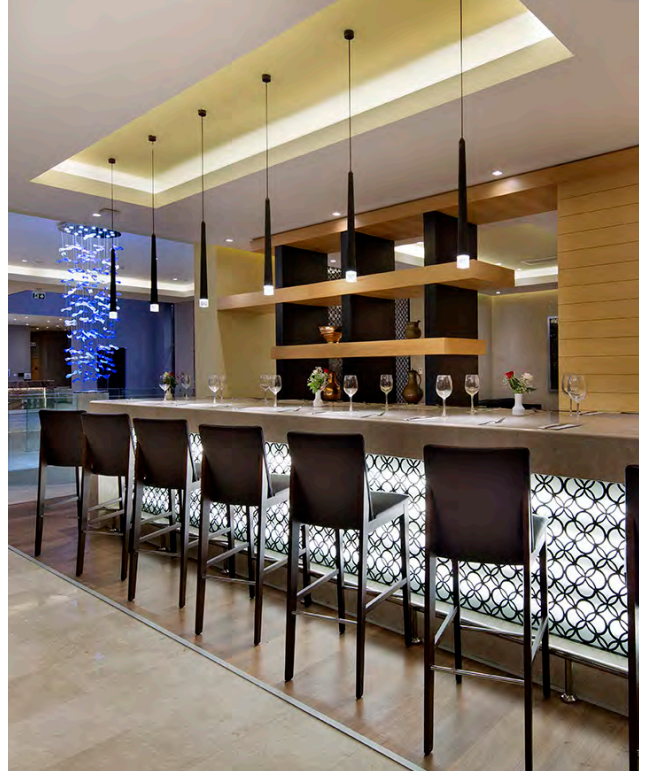
ARCH + INT



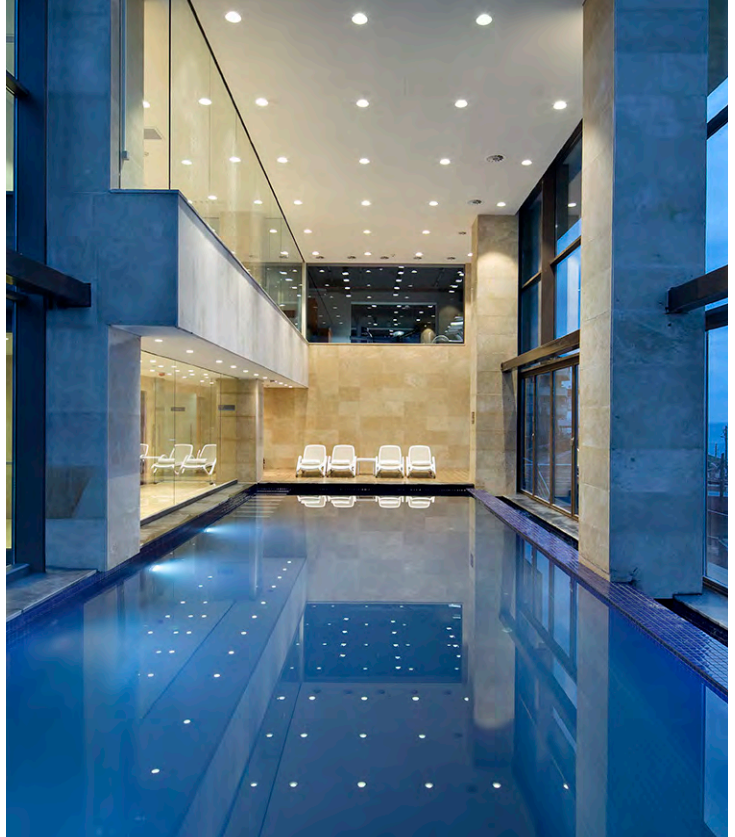
BUILT



DOUBLE TREE TRABZON



DOUBLE TREE TRABZON



ULUDAG LOFT BURSA

ULUDAG
BURSA

8.000 m2

-

ARCH + INT

ON HOLD (Building Permit Obtained)



ULUDAG LOFT BURSA



FOUR POINTS BY SHERATON İZMİR



İZMİR



2017



INTERIORS



BUILT



NZP HOTEL MECIDIYEKÖY



İSTANBUL



10.600 m²



2019



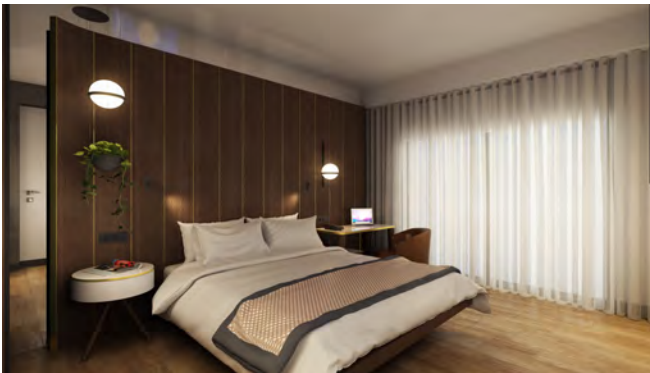
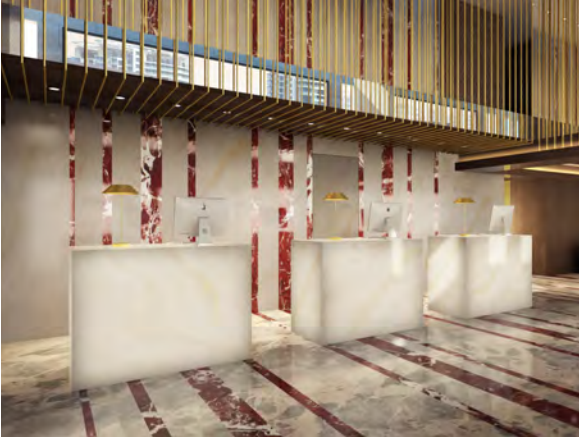
FAÇADE + INT



BUILT



NZP HOTEL MECIDIYEKÖY



PARK INN BY RADISSON ODAYERİ



ISTANBUL



8.350 m2



2015



INTERIOR + LNDSCP



BUILT



HILTON GARDEN INN ÇORLU



ÇORLU



11.600 m2



2013

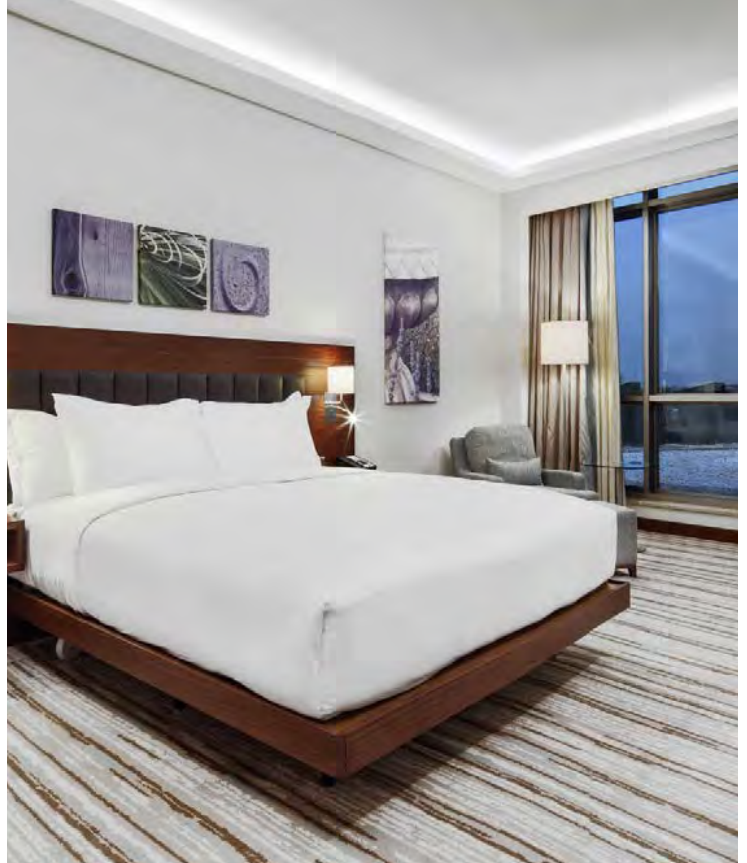


ARCH + INT



BUILT





HILTON GARDEN INN KONYA



KONYA



18.000 m2



2010



ARCH + INT



BUILT





HAMPTON BY HILTON ZEYTİNBURNU



İSTANBUL



11.400 m2



2015



FAÇADE + INT



BUILT



MIXED-USE

NEW TOWER TIRANA

RESIDENTIAL, HOTEL
& RETAIL CENTER



TIRANA



32.000 m2



2017



ARCHITECTURE



CONCEPTUAL



CORPORATE

McKINSEY & COMPANY COUNTRY HQ



İSTANBUL



2.600 m2



2018



INTERIORS



CONCEPTUAL







DOGUS OTOMOTIV CALL CENTER



ISTANBUL



600 m2



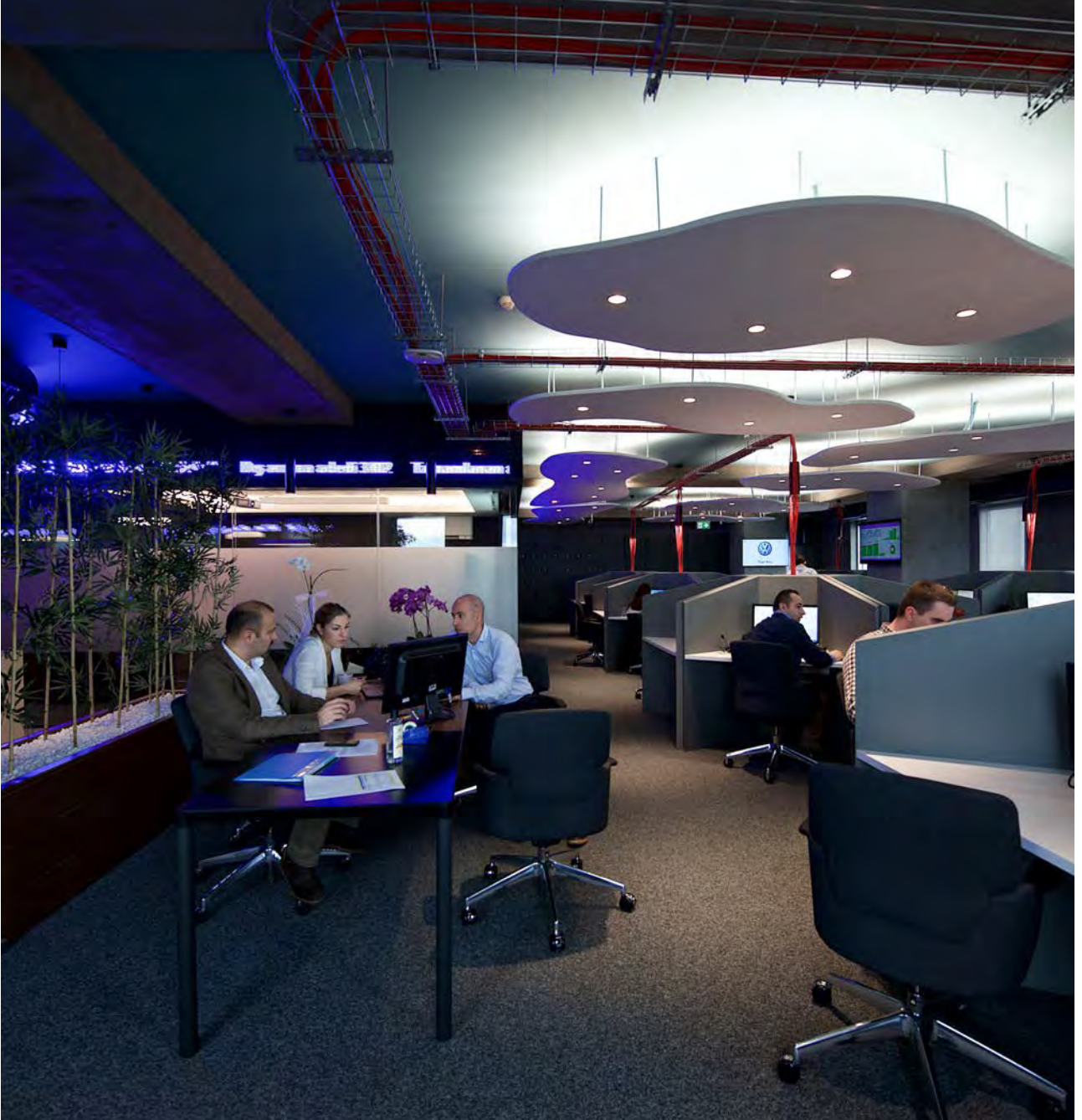
2014



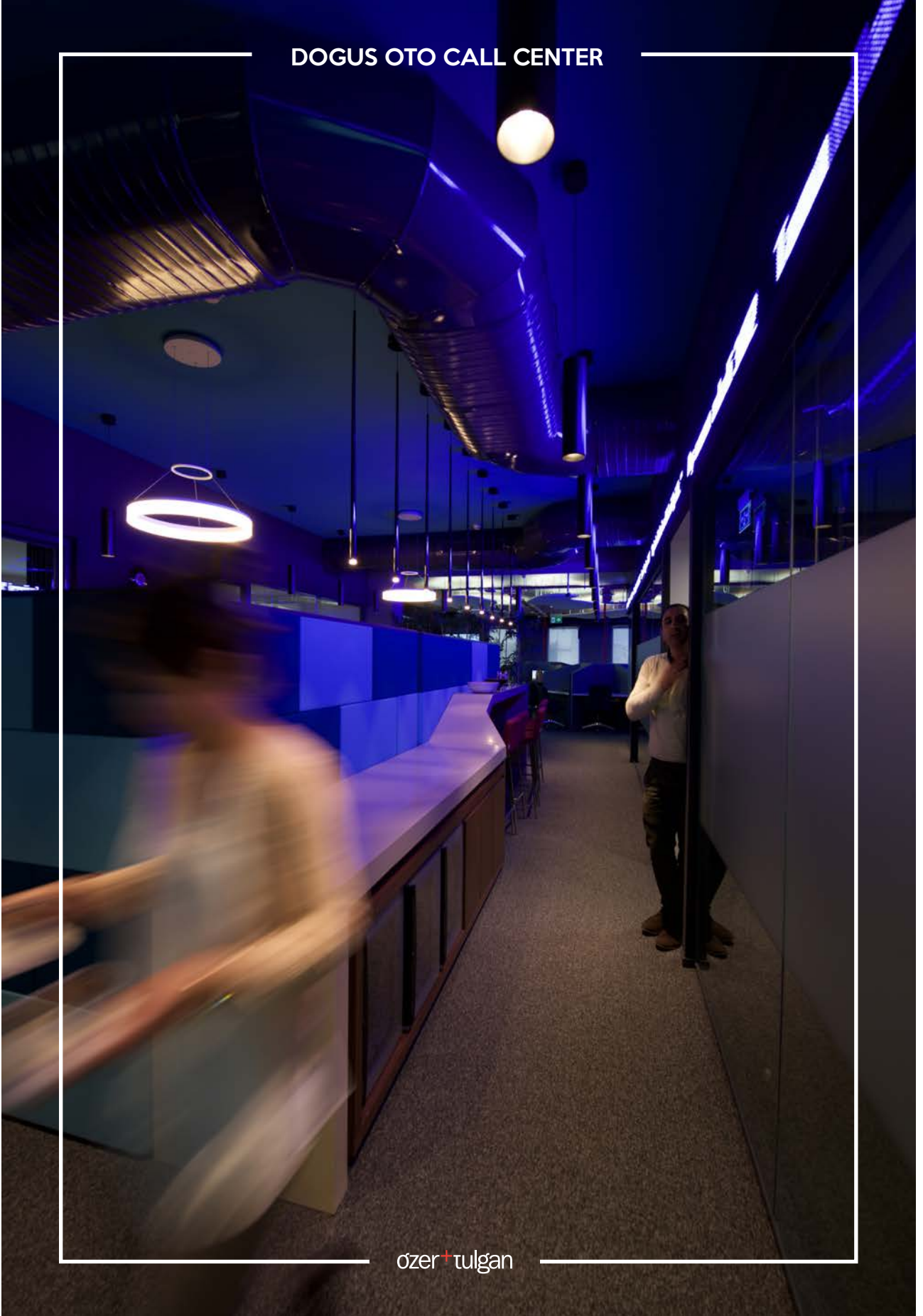
INTERIORS



BUILT



DOGUS OTO CALL CENTER



COMMERCIAL

BEBEK RESTAURANT



İSTANBUL



600 m2



-



ARCH + INT



CONCEPTUAL



RESIDENTIAL

KOŞUYOLU KORU RESIDENCES



ISTANBUL



67.000 m2



2016



FAÇADE + INT + LNDSCP



BUILT



KOŞUYOLU KORU RESIDENCES



MÜGE APARTMENT BUILDING TEŞVİKİYE



İSTANBUL



4.500 m2



2017



ARCH + INT



CONCEPTUAL



ÇAMLIK APARTMENT BUILDING GÖZTEPE



İSTANBUL



4.175 m2



2017



ARCH + INT



CONCEPTUAL





EDUCATIONAL

HACETTEPE UNI. CAMPUS HOUSING



ANKARA



130.000 m²



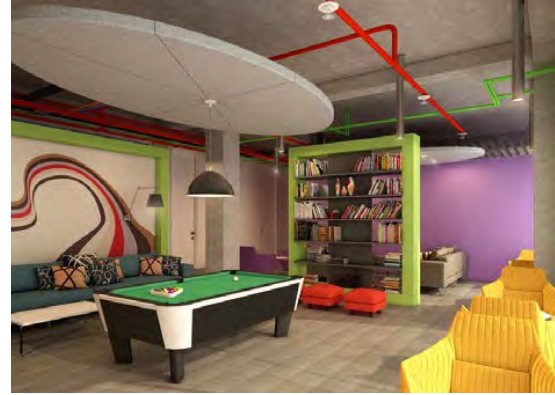
2014



ARCH + INT



BUILT



HACETTEPE TEKNOKENT SCHOOL (K-12)



ANKARA



41.000 m2



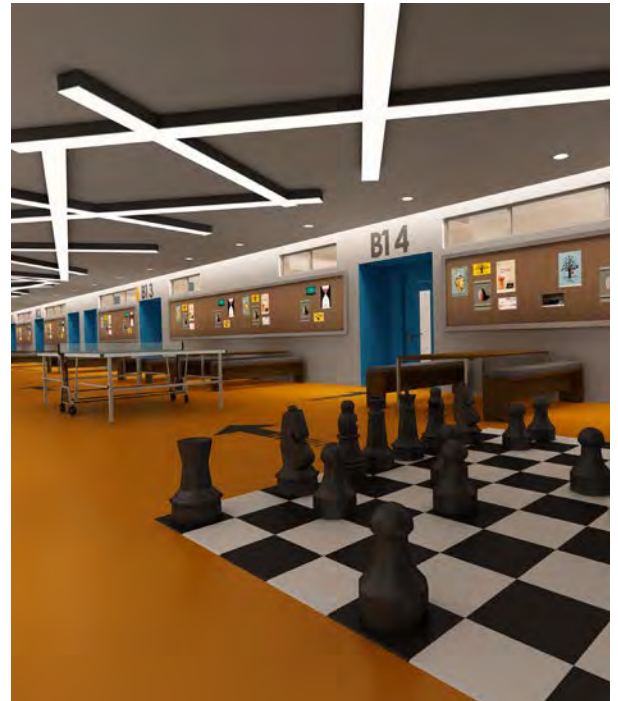
2014



ARCH + INT + LNDSCP



DISCONTINUED



C O N T A C T

ADDRESS

MACKA CAD. AZIZIYE PALAS. NO:20 K:5
34367 MACKA / SISLI
ISTANBUL - TR

PHONE

+90 212 2314623

FAX

+90 212 2316986

WEBSITE

www.ozertulgan.com

EMAIL

info@ozertulgan.com